

PNW COORDINATION MEETING
NOVEMBER 30, 2005



ENERGY STAR Qualified Homes: Quality Control Manufactured Homes

*Sam Rashkin, R.A.
National Director, ENERGY STAR for Homes*

ENERGY STAR PLANT GUIDE



ENERGY STAR



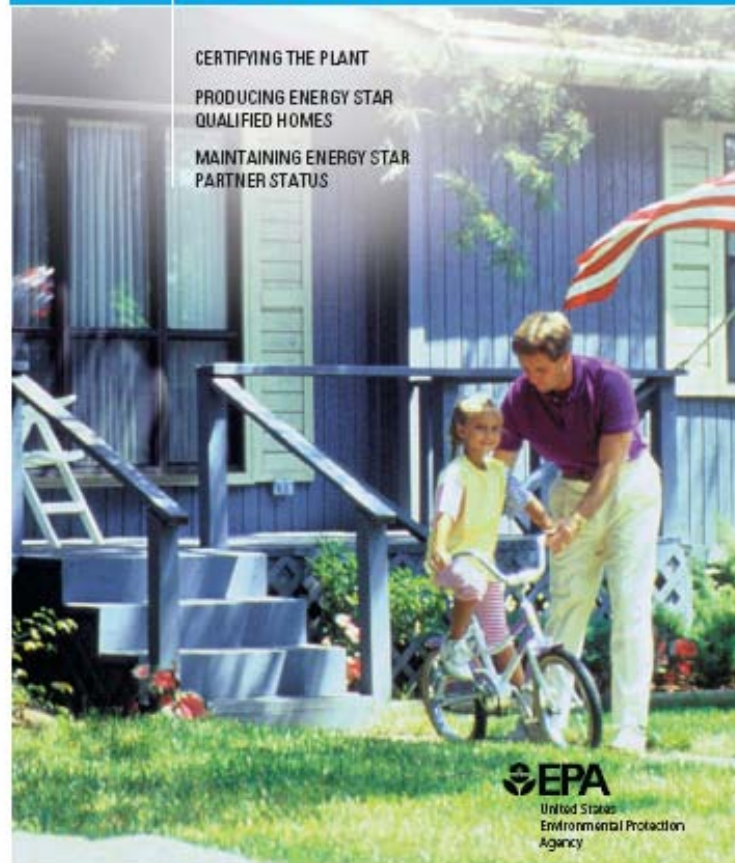
ENERGY STAR® QUALIFIED MANUFACTURED HOMES

DESIGN, MANUFACTURING, INSTALLATION, AND
CERTIFICATION PROCEDURES

CERTIFYING THE PLANT

PRODUCING ENERGY STAR
QUALIFIED HOMES

MAINTAINING ENERGY STAR
PARTNER STATUS



ENERGY STAR RETAILER GUIDE



ENERGY STAR



OLD SPEC



*HERS Score
of 86 and
15% > code,
or equivalent
package...*

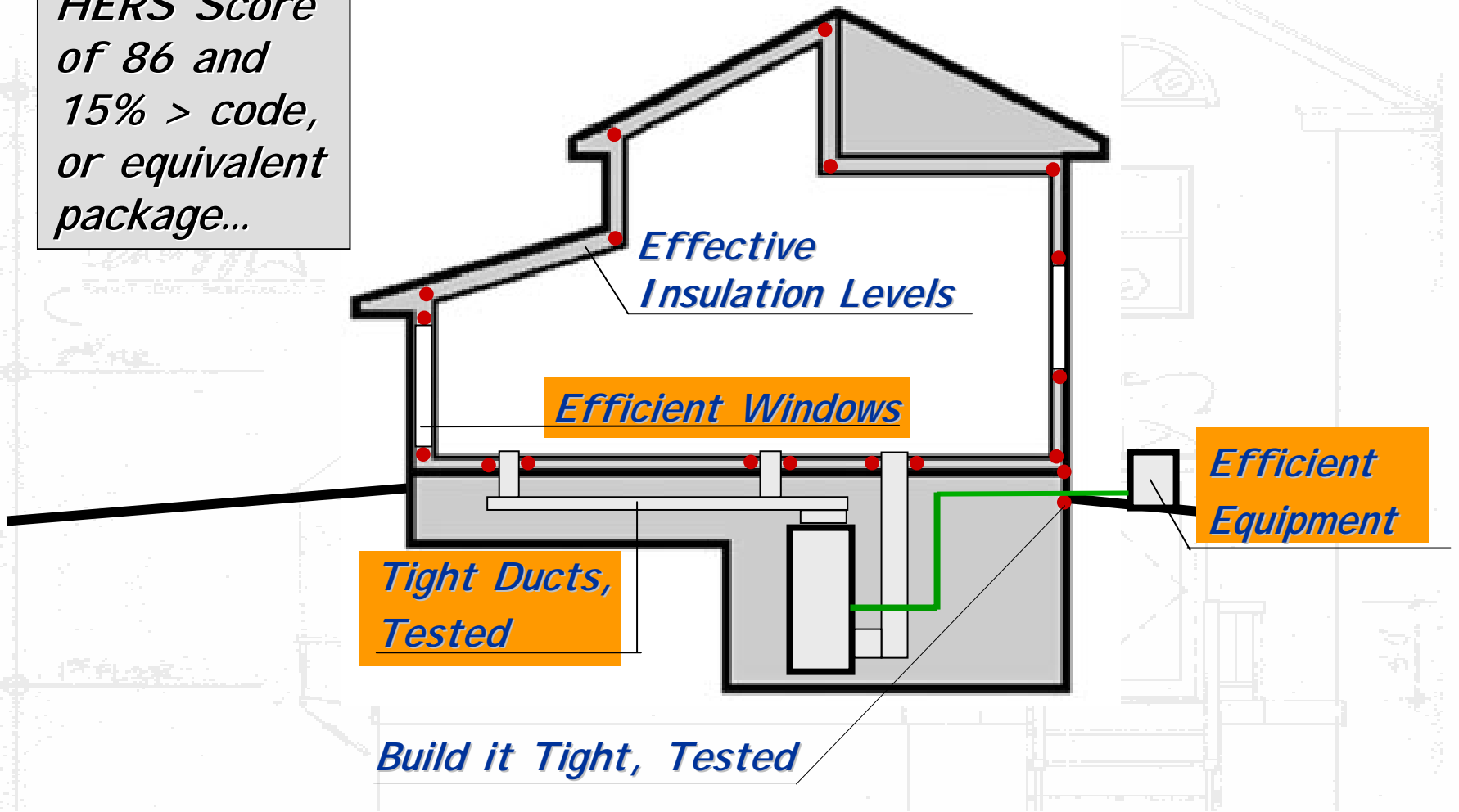
*Effective
Insulation Levels*

Efficient Windows

*Efficient
Equipment*

*Tight Ducts,
Tested*

Build it Tight, Tested



NEW SPEC



*Expanded
HERS Score
of 83/84, or
equivalent
package...*

*ENERGY STAR Qualified
Lighting, Fans, or
Appliances*

*IECC Insulation
Properly Installed*

Continuous Air Barrier

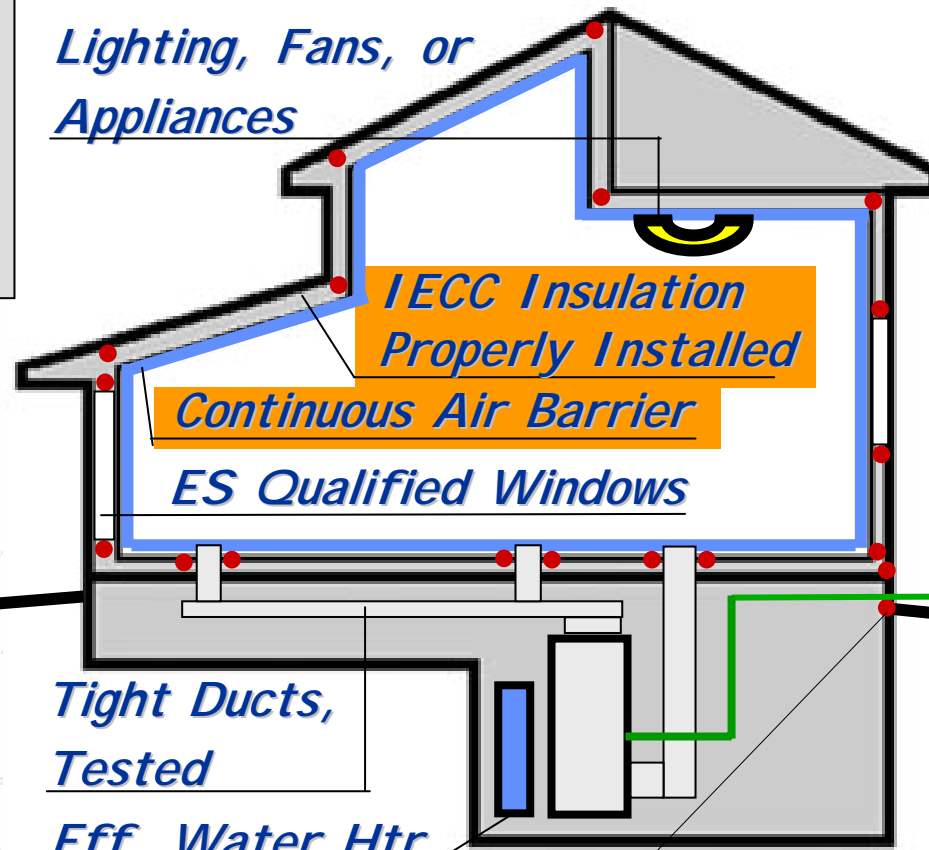
ES Qualified Windows

*Right-Sized
ES Equip.*

*Tight Ducts,
Tested*

Eff. Water Htr.

Build it Tight, Tested



INTRINSIC EFFICIENCY ADVANTAGES

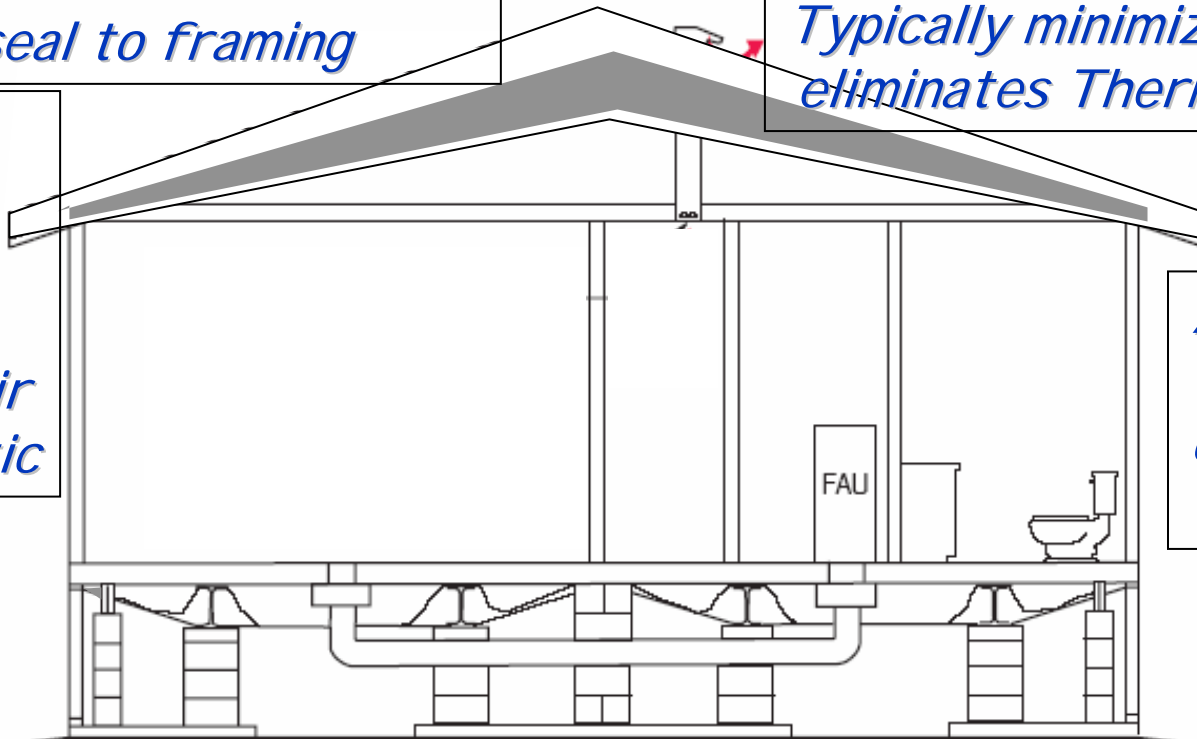


*Larger sheetrock foamed for
Full seal to framing*

*Simple geometry
Typically minimizes corners/
eliminates Thermal bypass*

*Much
reduced
recessed
Lighting
minimizes air
Leaks to attic*

*Much
reduced
Thermal
Bridging
Engineered
framing*



*Air handler
Inside
conditioned
space*

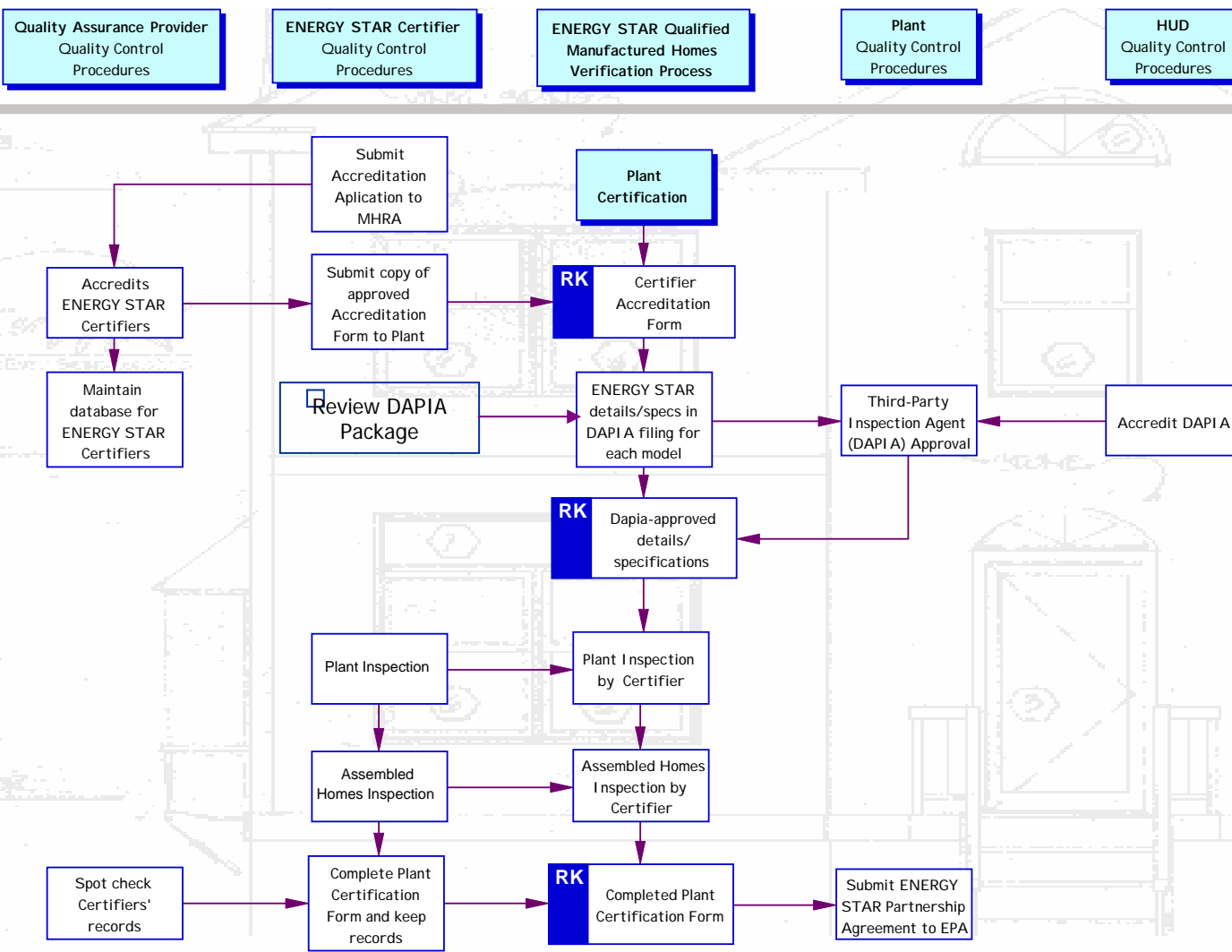
*Ducts about 90%
Inside conditioned space*

*Floor insulation protected
With air barrier liner*

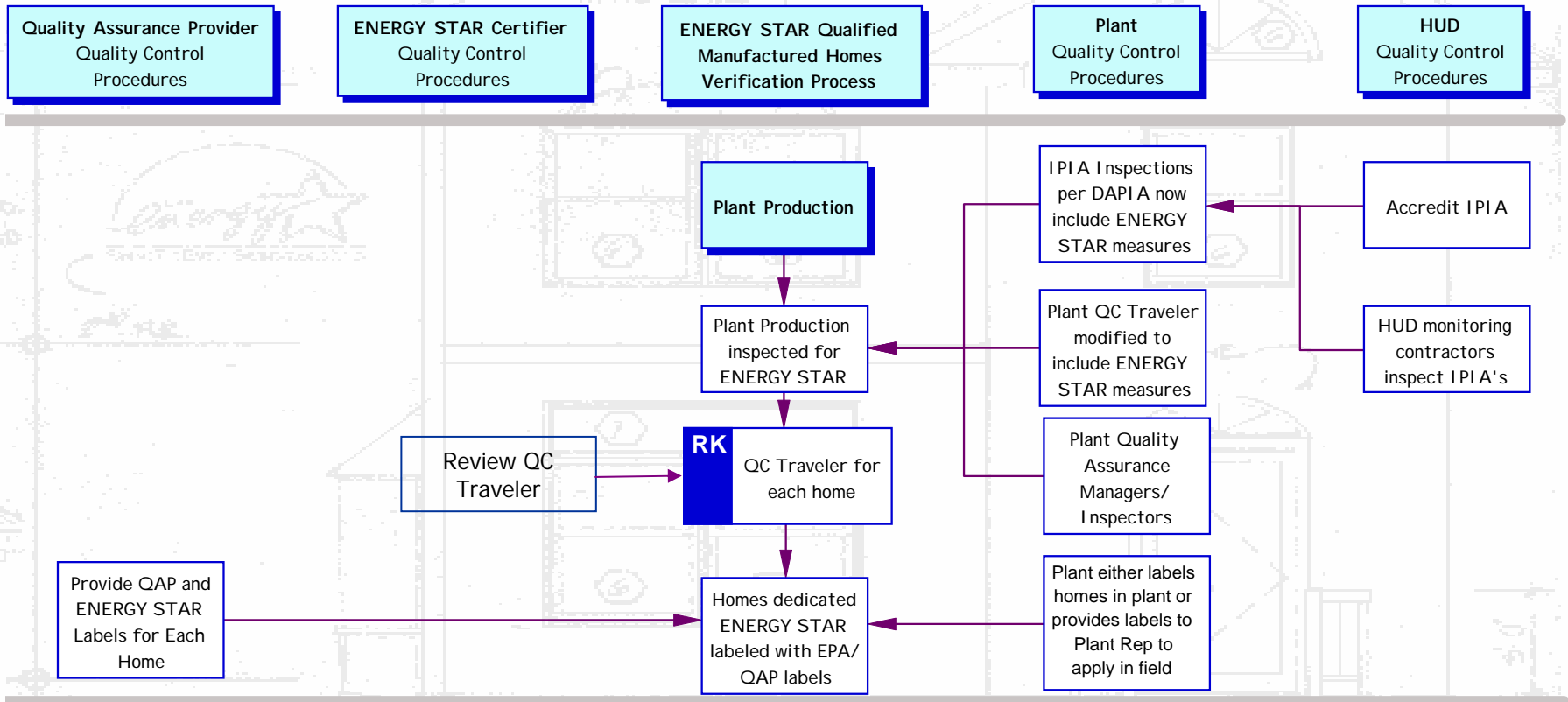
MANUFACTURED HOUSING VERIFICATION PROCESS: PLANT CERTIFICATION



ENERGY STAR



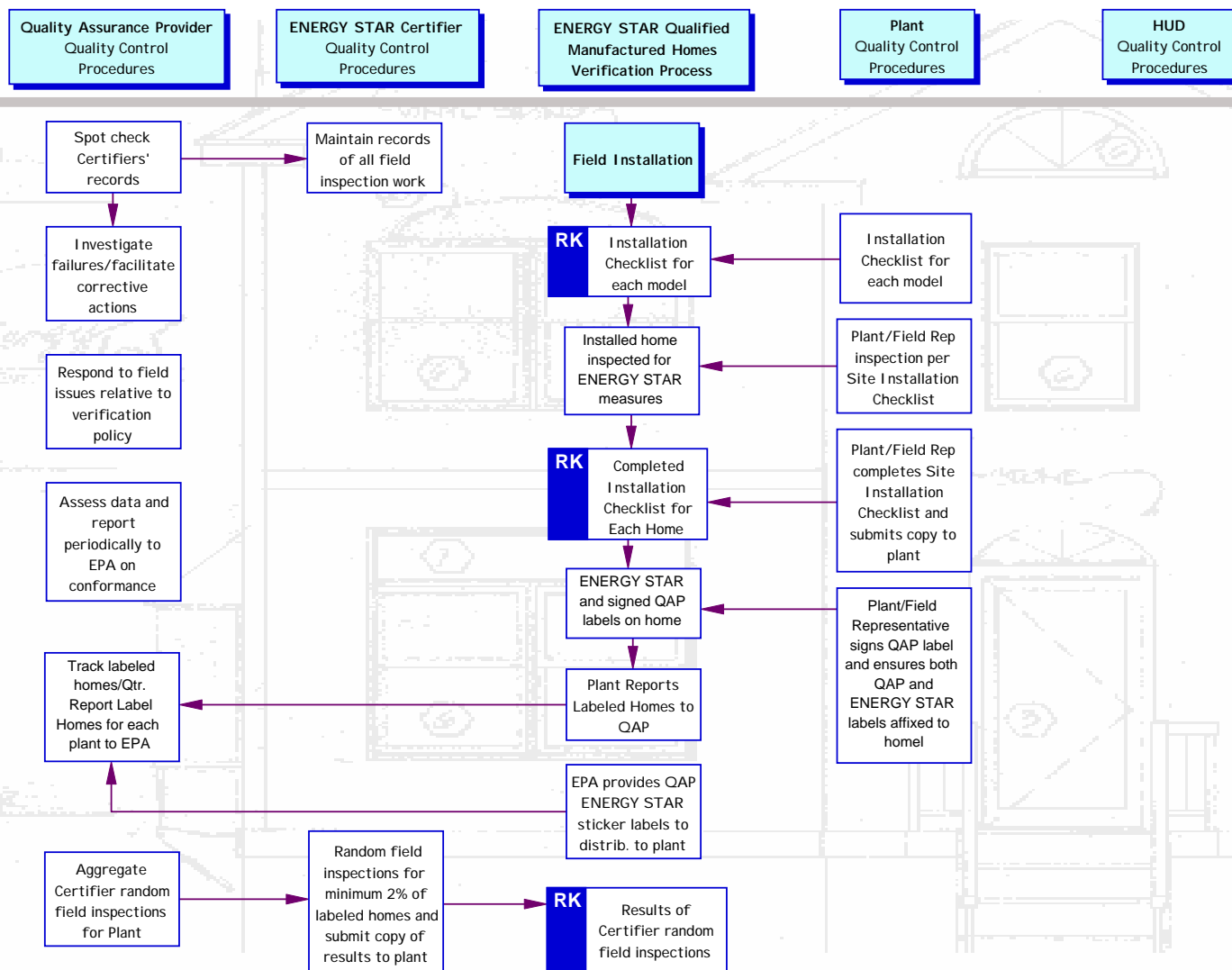
MANUFACTURED HOUSING VERIFICATION PROCESS: PLANT PRODUCTION



MANUFACTURED HOUSING VERIFICATION PROCESS: FIELD INSTALLATION



ENERGY STAR



HOW TO GET MORE INFORMATION



On the Web at:
<http://www.energystar.gov/homes>

