

# The New HERS Field Inspector Designation



Abe Kruger & Mike Barcik  
Southface Energy Institute  
February 28, 2006  
RESNET Conference



# What Does a Field Analyst Need to know?

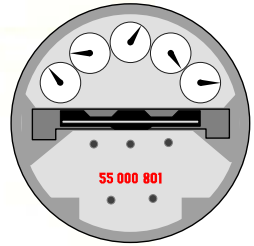


# Performance Testing





# Component Assessment



 <b>MI Home Products</b> 675 West Taylor St. Suite 120, PA 15260 <b>3500</b> SH/VINYL Clear/Cardinal Low E AIR Intercept	
<b>ENERGY Performance</b> Energy savings will depend on your specific climate, house, and the style. For more information, visit NRC's web site at <a href="http://www.nrc.org">www.nrc.org</a> .	
<b>Technical Information</b>	
Res	0.36
Non-Res	0.35
U-Value	0.33
SHGC	0.34
Visible Light Transmittance	0.48
Visible Light Reflectance	0.49
Manufacturer stipulates that these values conform to applicable NFRC procedures for determining window product energy performance. NFRC ratings are determined in a lab out of environmental conditions and specific product lines.	
This Revolution product has been certified by the manufacturer to meet the air leakage requirements of Section 1304.1.1, 2006 California Energy Standards.	
<b>MEETS REQUIREMENTS FOR</b> ZONE 2 ZONE 3	
	
120359.2 / 3500	





# Thermal Bypass Checklist



**Southface**

Responsible Solutions for Environmental Living



# Thermal Bypass Blocking & Sheathing

Solid sheet behind tubs & showers on insulated walls



• *Callback waiting to occur*

• *Call back prevention*



**Southface**

Responsible Solutions for Environmental Living

# Does a Field Analyst Need to know:

- A flow equation,  $Q$ , can be written as follows:

$$Q = C \times \Delta P^n$$

- The HERS Reference home determines Vertical fenestration area ( $A_F$ ) for one and two family detached homes by:

$$A_F = 0.18 \times A_F \times F_A$$

- Answer: Probably Not



# RESNET Requirements for Field Inspectors

1. Completion of training by Accredited Training Provider
2. Candidate may apply to opt out of training via challenge test
3. Candidate must pass RESNET National Rating Field Inspector Test
4. After training and/or test, must complete three probation inspections under direct supervision of certified rater



**Southface**

Responsible Solutions for Environmental Living



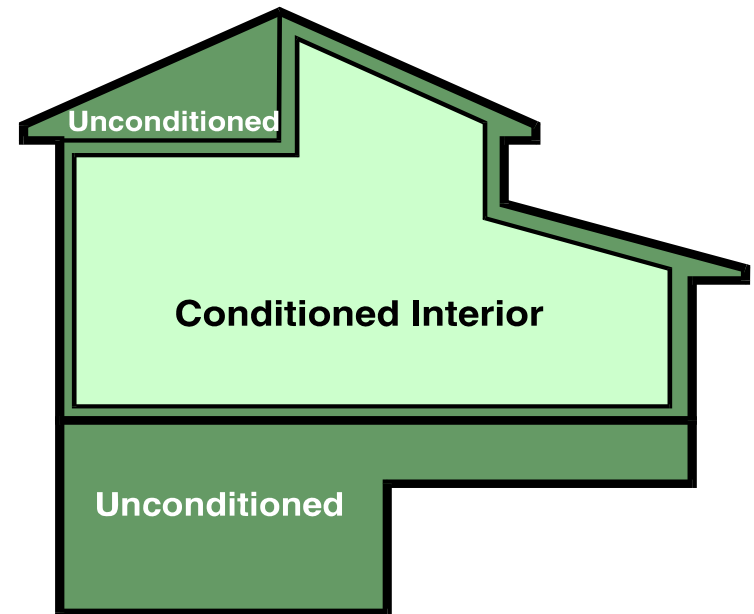
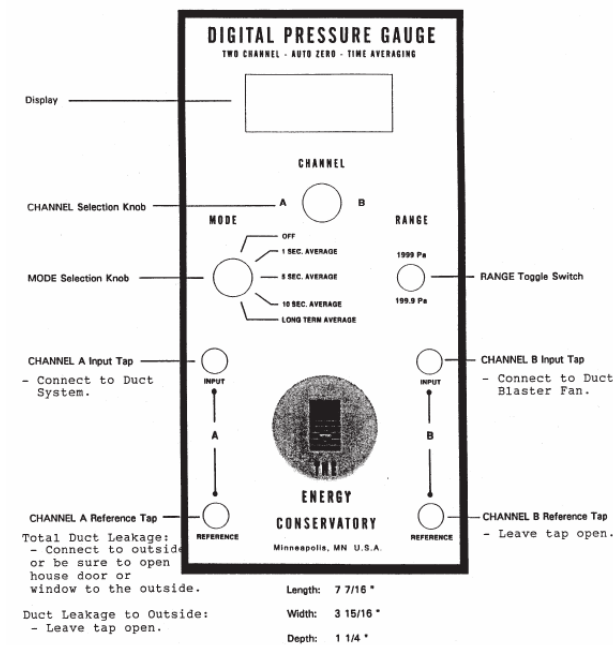
# 3 Day Pilot Training

- August 2004
- February 2006- POSTPONED



# Day 1

- Overview of HERS industry and ENERGY STAR®
- House as a System
- Building Components
- Pressure & Diagnostics



# Day 1 (Cont)

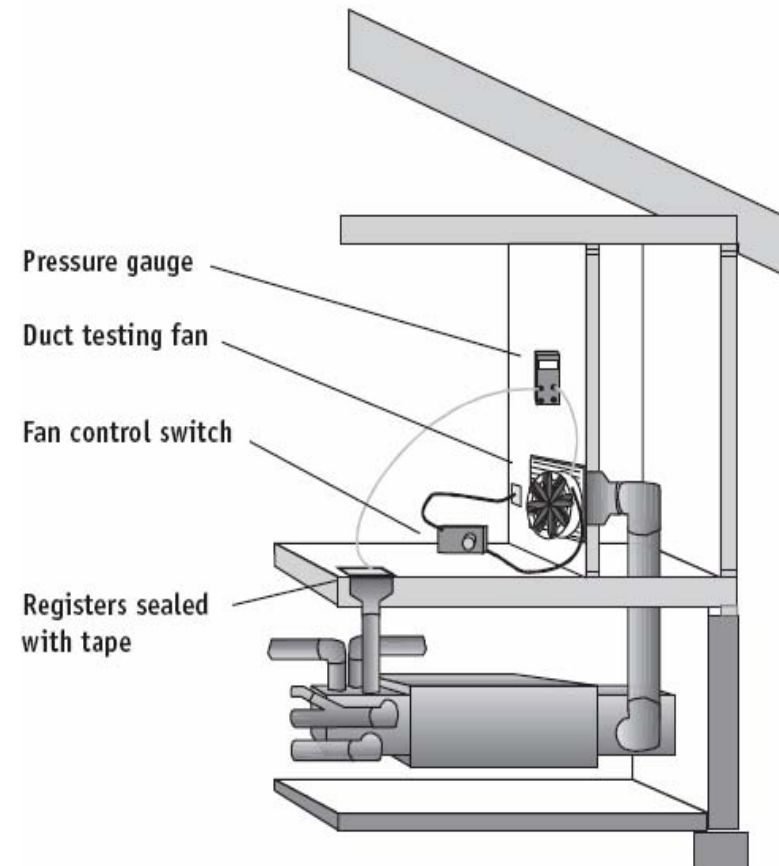
- Theory of Pressure Testing
- Calculating Areas and Volumes
- Determining Infiltration:  $ACH_{50}$  and  $ACH_{nat}$  and ELR ( $CFM_{50}$  / envelope area)
- Testing Protocol for House Depressurization
- Blower Door Testing (in field)





# Day 2

- Building Components - Cont.
- Heating & Cooling Equipment
- Ventilation & IAQ
- Fundamentals of Duct Pressure Testing
- Protocol for Duct/House Pressurization
- Software demo
- Duct Blast & Blower Door (in field)

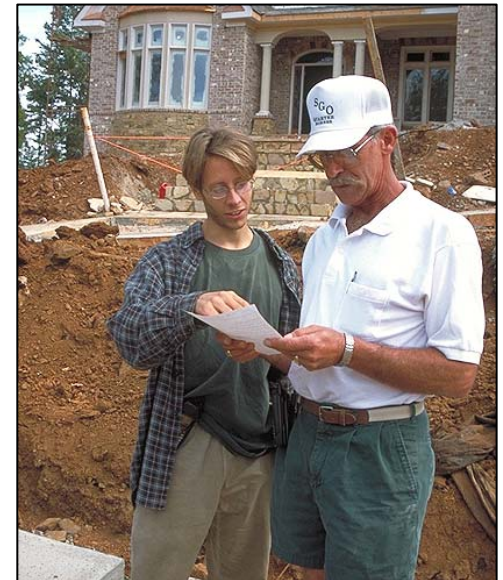


**Southface**

Responsible Solutions for Environmental Living

# Day 3

- Review Blower Door & Duct Blaster Testing
- Pre-sheetrock Walk Through (in field)
- Field Analyst Examinations



# Why Train Inspectors?

## Why Inspect Every Home?



**Southface**

Responsible Solutions for Environmental Living



# Southface Energy Institute

- Southface - showcase energy efficiency and sustainability
- EarthCraft House - green-building program of Greater Atlanta HBA
- [www.southface.org](http://www.southface.org)

