

Does Every Home Have to be Rated?



The Ohio Batch Test Protocol Pilot:

- 2001 Intro [PDF](#)
- 2002 Progress Report
 - Builders
 - Audit Strategy

RESNET 2002

The Ohio BTP Pilot



From 2001 Intro, BTP Overview:

- Establish Energy Models: ranch, 2story, splits
- Baseline or super audit 3 of each energy model [Link](#)
 - HERS audit + Duct Blaster + IR Scans
- Sample 1/5 (Full HERS audits on 20%)
- Failure requires Fix, Retest, Test 2 other units for same defect

RESNET 2002

The Ohio BTP Pilot



2002 Progress Report:

- Builders
 - Avenbury Lakes 160 homes, 20 models
 - M/I Homes 1696 homes, 145 models
 - Summit Homes 0 homes, 8 models
 - Adopted upgrade strategy
 - Declined to certify homes

RESNET 2002

The Ohio BTP Pilot

2002 Progress Report:

- Audit Strategy
 - Unit entry
 - Size calculations
 - Field Check Off report
 - Field data entry
 - Markup audited shell differences
 - Enter REMRate .blg
 - Batch FH with SH units

RESNET 2002



Audit Strategy ~ Unit entry



RESNET 2002



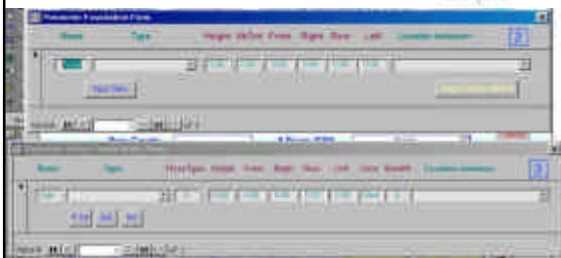


RESNET 2002



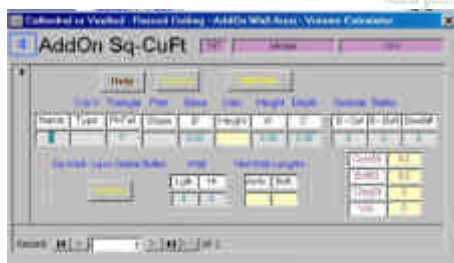
Audit
Strategy
~
Cond.
Area

Audit Strategy ~ Perimeter



RESNET 2002

Audit Strategy ~ AddOn



RESNET 2002

Audit Strategy ~ graphic



RESNET 2002

Training
Aid
~
Memory
Boost

ENERGY DESIGNED HOMES

Audit Strategy ~ Windows



RESNET 2002

[illegible]

Production – Ready for Field Audit List
To be completed for each

To be considered for work:




Audit Strategy ~ Ready List

Audit Strategy ~ Reports



RESNET 2002

ENERGY DESIGNED HOMES



Building Input Summary for Field Audit Check Off

General Information: 1234 Main St, Suite 100, City, State, Zip. Date: 12/15/2011. Auditor: John Doe.

Building Details: 1234 Main St, Suite 100, City, State, Zip. Date: 12/15/2011. Auditor: John Doe.

Energy Performance Metrics:


Metric	Value	Unit
Energy Use Intensity (EUI)	123.45	kWh/sq ft
CO2 Intensity	56.78	lb/sq ft
Water Use Intensity (WUI)	9.01	gal/sq ft

Audit Strategy

~

Field Check Off Report

[PDF](#)



Calculated Inputs for REM software

General Information: 1234 Main St, Suite 100, City, State, Zip. Date: 12/15/2011. Auditor: John Doe.

Building Details: 1234 Main St, Suite 100, City, State, Zip. Date: 12/15/2011. Auditor: John Doe.

Energy Performance Metrics:

Metric	Value	Unit
Energy Use Intensity (EUI)	123.45	kWh/sq ft
CO2 Intensity	56.78	lb/sq ft
Water Use Intensity (WUI)	9.01	gal/sq ft

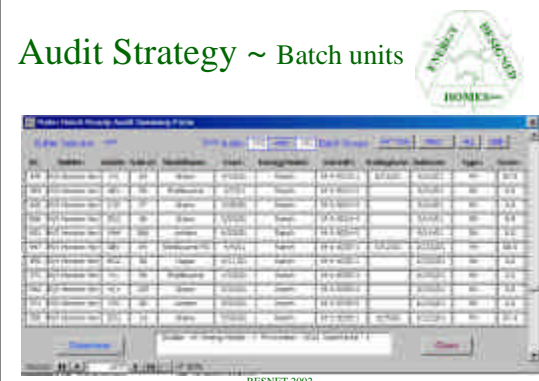
Audit Strategy

~

REM data inputs

[PDF](#)

Audit Strategy ~ Batch units



RESNET 2002

2001 Average Scores



• M/I Homes FH Rating Scores

- 120 FH units
- Mean 88.5
- Median 88.0
- Mode 88.7
- Consistency is the goal!

RESNET 2002

2001 Average Scores



• Avenbury Lakes FH Rating Scores

- 48 FH units
- Mean 87.1
- Median 87.3
- Mode 87.6
- Consistency is the goal!

RESNET 2002

2001 Avg. Air Leakage



• M/I Homes - 120 FH units

- Mean Avg. CFM50 1859
- Mean Avg. CFM25 90

• Avenbury Lakes - 48 FH units

- Mean Avg. CFM50 1385
- Mean Avg. CFM25 38

RESNET 2002

Does Every Home Have to be Rated?



- Final results and a review will not be in for another several months
- Utility bill comparisons will be another year

RESNET 2002

Does Every Home Have to be Rated?



- After having done a few hundred of these, one gets impressed with the sameness and the predictability
- The answer by the way is ... **NO!**

RESNET 2002
